

Base min: 14.5cm
x 18cm

Height min. = 27cm

\$50,000 Budget

\$3000



\$2500



\$1000



\$750



\$400



\$1,000



\$600



\$500



\$700



\$700



\$400

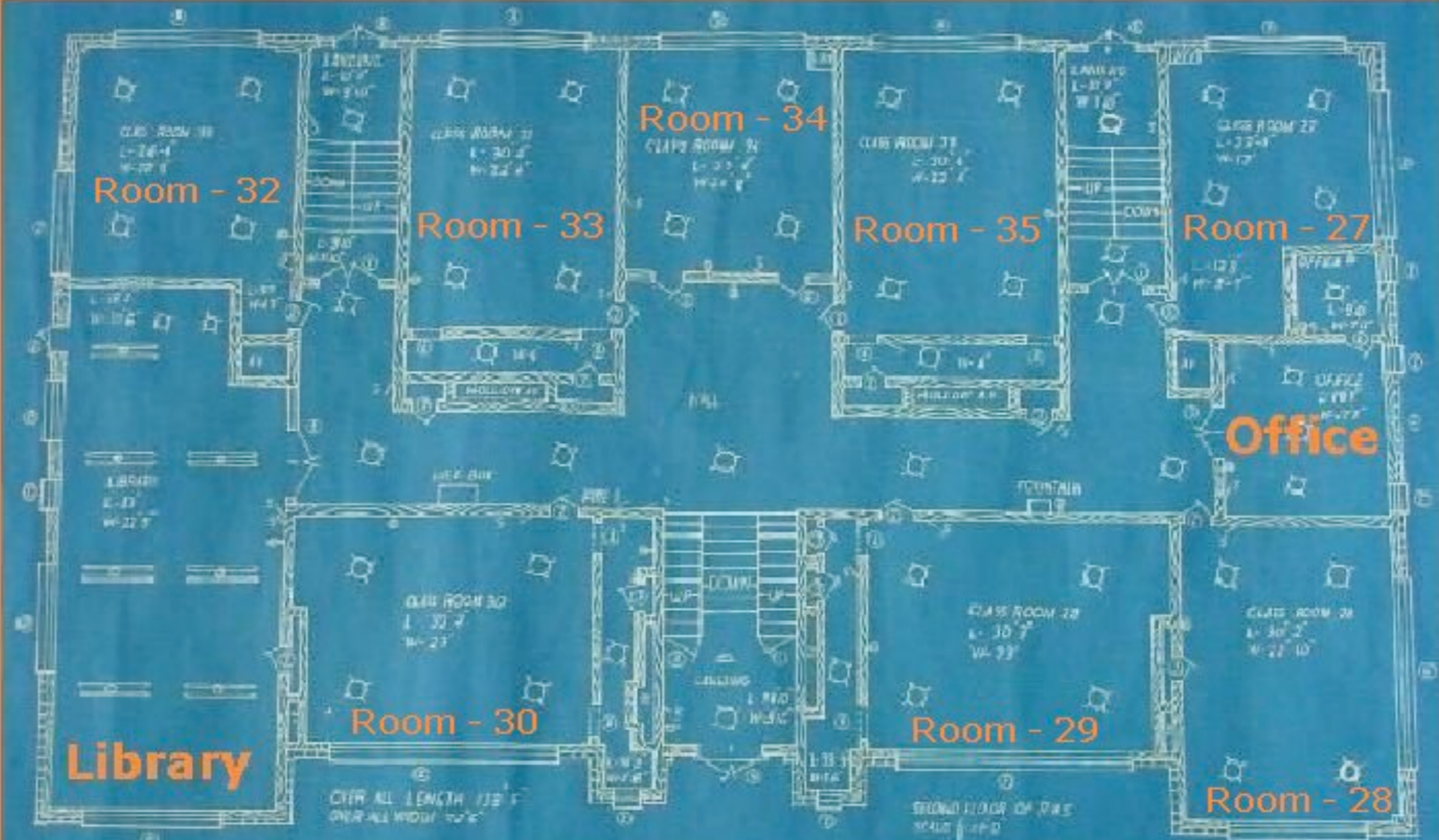


Don't take your
paperwork/materials home!

Goal = construct the strongest but least expensive tower!

Tower Shake-Off final jobs:

- Figure out your total COST \$\$\$ (subtract what you have left from \$50,000.)
- Complete PROCESS QUESTIONS as a group.
- Make sure you have your Tower Company LOGO taped to your tower.
- Bring your TOWER, RUBRIC, and BLUEPRINT up to Mr. N. before the contest.
- Be RESPECTFUL of all groups!



FINISH SCHEDULE

NO.	DESCRIPTION
1	CEILING - PLT. GYPSUM LT ON JOISTED TRUS
2	2" x 4" - PLT. KIT 18" x 24" SILE SHIP TRIM
3	2" x 4" - PLT. KIT 18" x 12" AT MET. SASH SINGLE
4	2" x 4" - PLT. INTERIOR LT MET. SASH TRIPLE
5	4" x 6" - PLT. EXT. SASH 21" ON SINGLE
6	4" x 4" - PLT. EXT. SASH 21" ON TRIPLE
7	1" x 4" - PLT. EXT. SASH 21" ON DOUBLE TRUS 2" SASH

DOOR SCHEDULE

NO.	WIDTH	HEIGHT	THICK	TYPE
1	3'	7'	1 1/2"	WOOD DOOR WITH GLASS 12" x 12"
2	3'	7'	1 1/2"	WOOD DOOR WITH GLASS 12" x 12"
3	30"	7'	1 1/2"	ALL WOOD
4	3'	7'	1 1/2"	DOOR CASE
5	3'	7'	1 1/2"	GLASS DOOR - CURT 12" x 12"
6	3'	7' 1/2"	1 1/2"	WOOD DOOR - GLASS CUT CYST

COTTAGE MAIL 15 x 27" TRIM AND 1/2" BACK CUT OF 3 RINGS AND WIRE - 1/2" OF WIRE IS MADE OUT BY WIRE - 1/2" IS REMOVED FOR AIR - WIRE

1/2" BRICK IN WALL
1/2" x 1/2" BRICK IN

PROJECT

LIBRARY FIRE ALARM SYSTEM
REWORK HIGH IS WORK - ENRUB
DATE - 9-18-27
NAME *John J. ...*
REWORK CARTRIDGE SLOT